

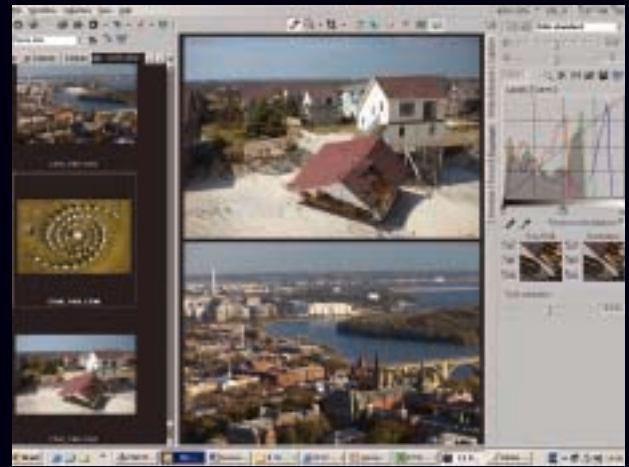
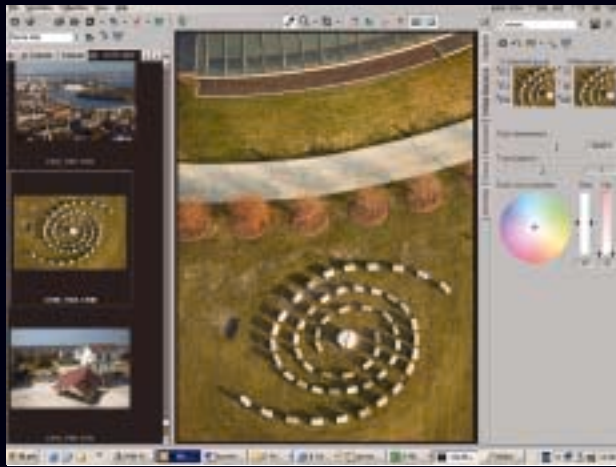
CAPTURE ONE DSLR LE



“Phase One Magic Strikes Twice.”
“... this software is designed so that you can produce images that are essentially finished, without even going into Photoshop...”

Michael Reichmann, Photographer, Editor

Photo: Cameron Davidson



Limited Edition - an affordable way of getting into professional RAW shooting

C1 LE software is the affordable way to get into professional RAW shooting. The Phase One RAW workflow enables you to produce a much better image quality with an easy and intuitive workflow. Phase One's RAW workflow is renowned in the professional market for its excellent image quality and efficient workflow tools. More than 25,000 professional photographers benefit from Phase One's image software every day.

If you are a single camera specialist and want to get the most out of your images C1 LE gives you a wide range of features that you can use to adjust your images. C1 LE is the perfect software for a photographer who cares for the single shot.

When buying C1 LE you will get access to Phase One's easy to use knowledge base at <http://support.phaseone.com>, where you can get free support 365 days a year, 24 hours a day. Phase One's official support forum is also available at www.rawworkflow.com.

C1 LE is available for Windows and you get one upgrade for free. If you are looking to the further you can increase productivity or do more advanced image editing or adjustments you can upgrade from C1 LE to C1 SE or C1 PRO at anytime, you will be offered a preferential price.

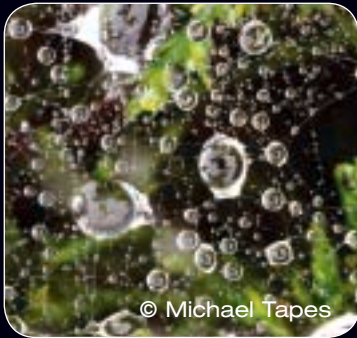


TRY IT FREE FOR 15 DAYS

Register and download latest version through:
www.c1dslr.com (Denmark)
www.rawworkflow.com (US)
www.pixource.com (Asia)



PHASE ONE



■ Features & Functions:

Maximize image quality*:

- Patent pending Image Processing algorithms.
- Flexible white balance adjustment.
- Full color management.
- Camera profiles are provided.
- Noise reduction and sharpening algorithms.
- Multiple tone response curves.
- Focus and sharpness verification in full RAW resolution.

Optimize image file workflow*:

- Real-time adjustment and preview of all parameter changes.
- Thumbnails always reflect the conversion settings currently set for each RAW file.
- All image and adjustment changes are stored for later use.
- All image settings can easily and instantly be applied to any or all image files.
- Comprehensive file management provisions.
- Dual view for comparing similar image files.
- Conversion settings can be archived and restored.
- Direct conversion to black and white.

■ Phase One A/S

Roskildevej 39
DK-2000 Frederiksberg
Denmark
Fax: +45 36 46 02 22
www.c1dslr.com

Phase One U.S.

200 Broadhollow Road
Melville, NY 11747
USA
Fax: (631) 547-9898
www.c1dslr.com

Phase One Asia

1177 Nong, No 16 - 1802
Yong Shu Pu Lu
Yong Su District
Shanghai, 200082
China

Phase One is a registered trademark of Phase One A/S. All other brand or product names are trademarks or registered trademarks of their respective holders. ©2004 Phase One A/S. All rights reserved. May 2004 # 86703001.

Special Features & Functions for the C1 LE

Exposure compensation (+/- 2.5EV), contrast, and saturation adjustment.

Batch processing of up to 20 conversions at a time.

RAW conversions are done in the background allowing the full functionality of C1 LE to continue while conversions are taking place.

Available for: Windows 2000/XP

Languages: English

Technical support:

Phase One's easy to use knowledge base at <http://support.phaseone.com>, where you can get free support 365 days a year, 24 hours a day.

The official Phase One support forum at www.rawworkflow.com.

Camera support:

Canon 10D / Canon 300D Rebel / D30 / D 60
Nikon D100 / D70
Olympus E1 / E10 / E 20
Pentax *istD