

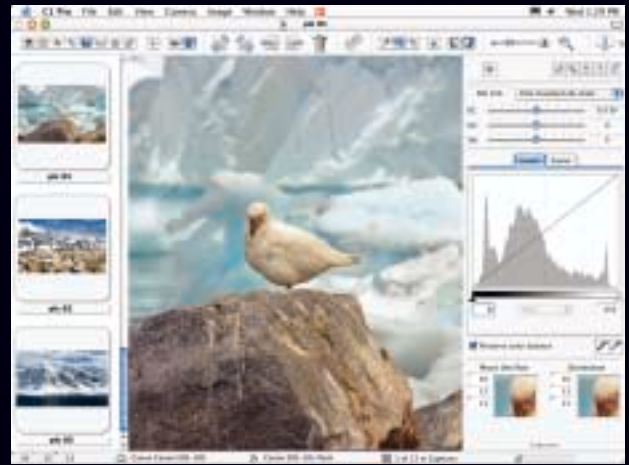
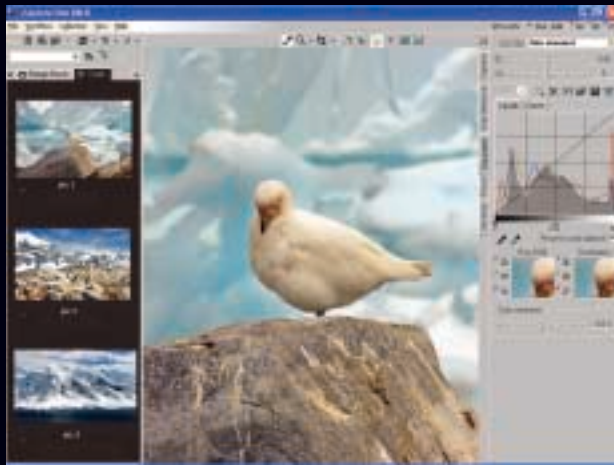
C1 PRO

- GET MORE FROM RAW™

“I have four software packages that I use for raw conversions of digital images. However, I find that I use C1 software almost exclusively because of its easy workflow and fast processing speed. I can continue to work on other projects while C1 works in the background.”

Fred Weiss, Photographer - USA

Photo: Fred Weiss



C1 PRO software is designed for the advanced and most demanding digital SLR photographers. It contains all the features that a professional photographer needs. The Phase One's patent pending RAW file image processing technology provides the highest image quality. C1 PRO includes a full range of advanced features that you can use to adjust your images or you can keep it simple and save hours of work! More than 25,000 professional photographers benefit from Phase One's image software every day.

C1 PRO adds unlimited batch capability, multiple output files from each conversion, a color editor, a profile editor, IPTC support, additional camera support and more. With the highest conversion quality available today, and a workflow that has been universally praised. C1 PRO clearly sets the standard for RAW conversion software.

The C1 PRO software supports both Mac and Windows platforms and provides you with maximum camera flexibility.

You will not only enhance your image quality and your workflow you will also get access to a range of support services. As a C1 PRO customer you will get preferential support, one of our services is Phase One's advanced knowledge base at <http://support.phaseone.com>.

The C1 PRO is made by photographers for the photographers. Phase One is determined to provide the best software for digital SLR image processing, and as a C1 PRO customer you get two software updates for free.



**TRY IT FREE
FOR 30 DAYS**

Download the latest version from
www.c1dslr.com



PHASE ONE



Photo: Fred Weiss

Phase One A/S
Roskildevej 39
DK-2000 Frederiksberg
Denmark
Fax: +45 36 46 02 22
www.c1dslr.com

Phase One U.S.
200 Broadhollow Road
Melville, NY 11747
USA
Fax: (631) 547-9898
www.c1dslr.com

Phase One Asia
117 Nong, No 16 - 1802
Yong Shu Pu Lu
Yong Su District
Shanghai, 2000282
China

Phase One is a registered trademark of Phase One A/S. All other brand or product names are trademarks or registered trademarks of their respective holders. ©2004 Phase One A/S. All rights reserved.
April 2004 # 86702602.

PHASE ONE

■ Features & Functions:

- Maximize image quality*:**
- Patent pending Image Processing algorithms.
 - Flexible white balance adjustment.
 - Full color management with target color settings.
 - Camera profiles are provided.
 - Noise reduction and sharpening algorithms.
 - Multiple session folder support.
 - CMYK output.
- Optimize image file workflow*:**
- Real time adjustment and preview of all parameter changes.
 - Thumbnails always reflect the conversion settings currently set for each RAW file.
 - All image settings can easily and instantly be applied to any or all image files.
 - Tagging and sorting comprehensive file management provisions.
 - Dual view for comparing similar image files.
 - Conversion settings can be archived and restored.
 - IPTC support.

Special Features & Functions for the C1 PRO

- Exposure compensation (Mac and Windows: +/- 2.5EV), contrast, and saturation adjustment.
 - Unlimited batch processing to RAW files while C1 PRO continues to convert raws in the background.
 - Online help in all languages.
 - Full price voucher to use against buying P1 digital back.
- Available for:** Both Windows 2000/XP, and Mac OS X 2.8 and later.
- Languages:** English, French, German, Italian, Spanish, Simplified Chinese, Japanese.
- Technical support:** Phase One's easy to use knowledge base at <http://support.phaseone.com>, where you can get free support 365 days a year, 24 hours a day.
- The official Phase One support forum at www.rawworkflow.com
- Camera support:**
- Phase One P 25 / P 20 / H 25 / H 20 / H 10 / H 101 / H 5
 - Canon 1D / 1Ds / 10D / D30 / D60 / 300D / 1D MK II
 - Nikon D100 / D1X / D1H / D2H / D70
 - Fuji S2
 - Olympus E1 / E10 / E 20
 - Pentax *istD