

C1 SE

- GET MORE FROM RAW™

“C1 gives me the ease of mind shooting action photography with highly paid athletes on less than perfect conditions. With only little control over the environment and always on a tight time frame the one of the lifetime shot can not be recreated but must be nailed on at the first try. C1 lets me not only deal with the right color balance, and little exposure error's in post production, but lett's me produce many photographs from one capture.”

Frank Hoppen, Photographer - USA

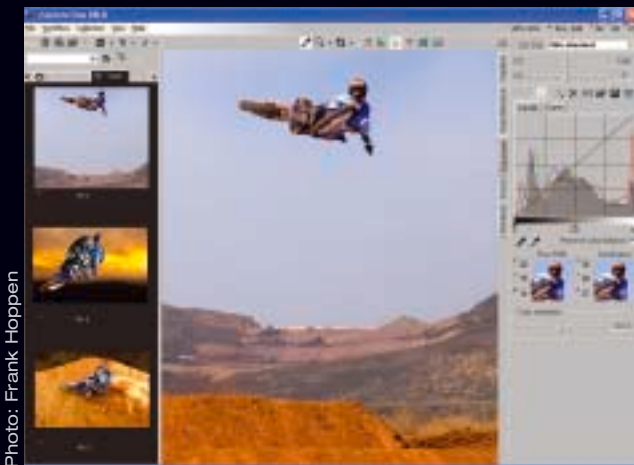


Photo: Frank Hoppen



C1 SE is the choice confident digital SLR photographer choose, who wants the best image quality from the market! Phase One's patent pending RAW file technology provides the highest image quality.

C1 SE includes a range of advanced features that you can use to adjust your images while saving hours of time in your workflow. More than 25,000 professional photographers benefit from Phase One's image software every day.

Achieving a fast and simple workflow while processing RAW files is the greatest challenge that modern digital SLR photographers faces. You will see that C1 SE meets this challenge head on. You can enhance, adjust, and preview your RAW files in real time, while batch processing the RAW files in the background. All is done in a simple workflow, making your journey from RAW files to processed images, as fast and easy as possible.

The C1 SE software supports the operation system of your choice either Mac or Windows platforms. You are entitled to get one update for free. When buying C1 SE you are invited to use Phase One's advanced easy to use knowledge base at <http://support.phaseone.com> where you can get free support 365 days a year, 24 hours a day.

If you want to enhance your workflow further or are in the need for an extra tool to improve your images you can upgrade from C1 SE to C1 PRO at anytime, this will be offered for a preferential price.



**TRY IT FREE
FOR 15 DAYS**
Download the latest version from
www.c1dslr.com

PHASE ONE



Photo: Frank Hoppen

■ Features & Functions:

Maximize image quality*:

Patent pending Image Processing algorithms.
Flexible white balance adjustment.
Full color management.
Camera profiles are provided.
Noise reduction and sharpening algorithms.
Multiple tone response curves.

Focus and sharpness verification in full RAW resolution.

Optimize image file workflow*:

Real time adjustment and preview of all parameter changes.
Thumbnails always reflect the conversion settings currently set for each RAW file.
All image and adjustment changes are stored for later use.
All image settings can easily and instantly be applied to all image files.
Comprehensive file management provisions.
Dual view for comparing similar image files.
Conversion settings can be archived and restored.

Direct conversion to black and white.

■ Phase One A/S

Roskildevej 39
DK-2000 Frederiksberg
Denmark
Fax: +45 36 46 02 22
www.c1dslr.com

Phase One U.S.

200 Broadhollow Road
Melville, NY 11747
USA
Fax: (631)547-9898
www.c1dslr.com

Phase One Asia

1177 Nong, No 16 - 1802
Yong Shu Pu Lu
Yong Su District
Shanghai, 200082
China

Phase One is a registered trademark of Phase One A/S. All other brand or product names are trademarks or registered trademarks of their respective holders. ©2004 Phase One A/S. All rights reserved.
May 2004 # 86703301.

Special Features & Functions for the C1 SE

Exposure compensation (Mac: +/- 2.5EV), contrast, and saturation adjustment.

Batch processing of up to 100 conversions at a time.

RAW conversions are done in the background allowing the full functionality of C1 SE software to continue while conversions are taking place.

Available for: Windows 2000/XP, and Mac OS X 2.8 and later.

Languages: English, French, German, Italian, Spanish, Simplified Chinese, Japanese.

Technical support: Phase One's easy to use knowledge base at <http://support.phaseone.com>, where you can get free support 365 days a year, 24 hours a day.

The official Phase One support forum at www.rawworkflow.com.

Camera support: Phase One P 25 / P 20 / H 25 / H 20 / H 10 / H 101 / H 5
Canon 1D / 1Ds / 10D / D30 / D60 / 300D / 1D MK II
Nikon D100 / D1X / D1H / D2H / D70
Fuji S2
Olympus E1 / E10 / E 20
Pentax *istD